

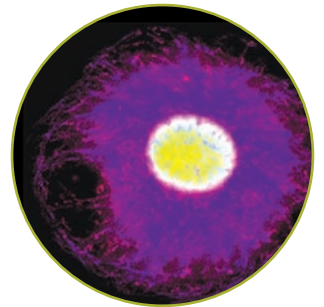
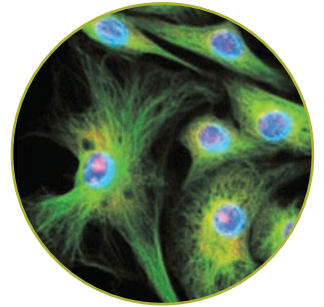
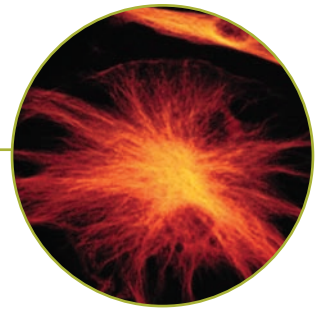
# X-Cite® 120

FLUORESCENCE ILLUMINATION

## THE STANDARD IN FLUORESCENCE ILLUMINATION

The X-Cite® 120 gives you convenience and control never before available in a fluorescence illuminator. The X-Cite® 120 has been engineered specifically to let you focus your energy where it belongs – on the best possible results.

- Pre-aligned Intelli-Lamp™ System
- 2000 Hour Lamp Life
- No heat transferred to specimen





## FEATURES:

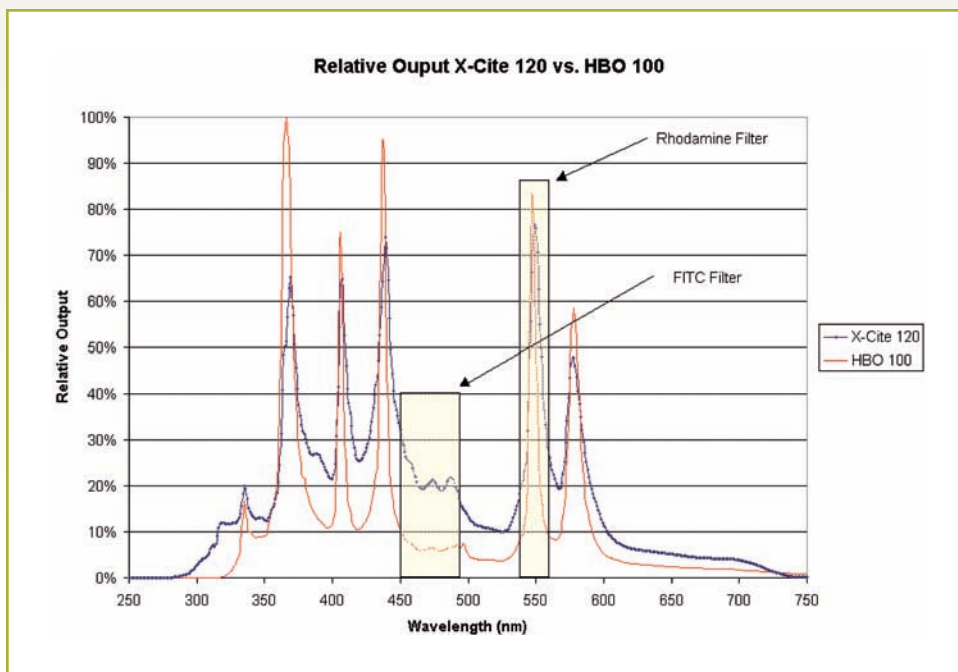
## BENEFITS:

Pre-Aligned lamp	Easy lamp replacement - no alignment required
2000 hour lamp life	Fewer lamp replacements saves time and money
Intelli-Lamp™ technology	Maintains optimum lamp temperature; automatically accumulates lamp hours
Light guide attachment	No heat from the lamp is transferred to the specimen
Powerful 120W lamp	Rich spectrum with high excitation intensity
Custom Coupling Optics	Uniform Field of View with various aperture stops and magnifications
CE Marked	Ready for use worldwide

## A RICHER SPECTRUM AND A BRIGHTER IDEA

The powerful 120W Metal Halide lamp used in the X-Cite® 120 provides excitation intensity comparable to, or better than, conventional mercury arc lamps, with an added benefit: the broader spectrum excites more fluorophores.

Fluorophore	Peak Excitation Wavelength (nm)	Output X-Cite 120 (mW)	Output HBO (mW)
GFP / Ds Red (FRET)	471 - 488	8.0	2.8
FITC	490	8.1	3.0
Texas Red	595	7.0	3.3
TRITC	555	17.9	6.5
Gy5	552	27.6	12.1
Rhodamine	550	33.9	23.3
Lucifer Yellow	428	16.0	6.7



## RESULTS WITHOUT RISKS: IMPROVED SAFETY

The X-Cite® 120 has been designed with safety in mind. Its enclosure and connections have been specially engineered to eliminate light leakage. Its pre-aligned lamp eliminates accidental UV or bright light exposure. Automatic safety interlock features activate during lamp or light guide removal, providing additional accidental exposure protection. The system's environmentally friendly lamp employs a quick-strike arc that eliminates hazardous ozone production. Your lab equipment is also protected from power surges and RF interference. The X-Cite® 120 meets electromagnetic compatibility standards for conductive and radiated emissions.

# X-Cite® 120

## THE INTELLIGENCE OF X-CITE®

### Easier to Use:

*The user-friendly controls of the X-Cite® 120 make operation simple and straight forward*

### Better Results:

*Powerful 120W lamp and custom optics provide high excitation intensity with a very uniform field of view*

### Practical Features:

*An adjustable iris is available for applications where photobleaching is a concern*

## PROPRIETARY DESIGN: INTELLI-LAMP™ SYSTEM

### Ease of Use

No more difficult lamp changes – just snap out the old lamp and snap in a new one. It's even pre-aligned for further convenience. Rated at 2000 hours, this powerful 120W Metal Halide lamp has up to ten times the life span of a conventional lamp. That means significantly fewer replacements, saving you both time and money. Connecting the X-Cite® 120 to your microscope is easy, too. Simply snap the adaptor into your existing light port and you're ready to work.

### Better Results

The Intelli-Lamp™ system's proprietary design continually monitors lamp temperature, preventing life-shortening restrikes until the lamp cools to a "safe-to-restart" state. The design also helps to ensure that the X-Cite® 120 operates at a consistent intensity – both over time and from lamp to lamp – for reliable and repeatable results. Finally, working with the liquid light guide, the 120W Metal Halide lamp provides rich spectral excitation and produces a totally uniform field of view, and ensures that no heat is transferred to the specimen.



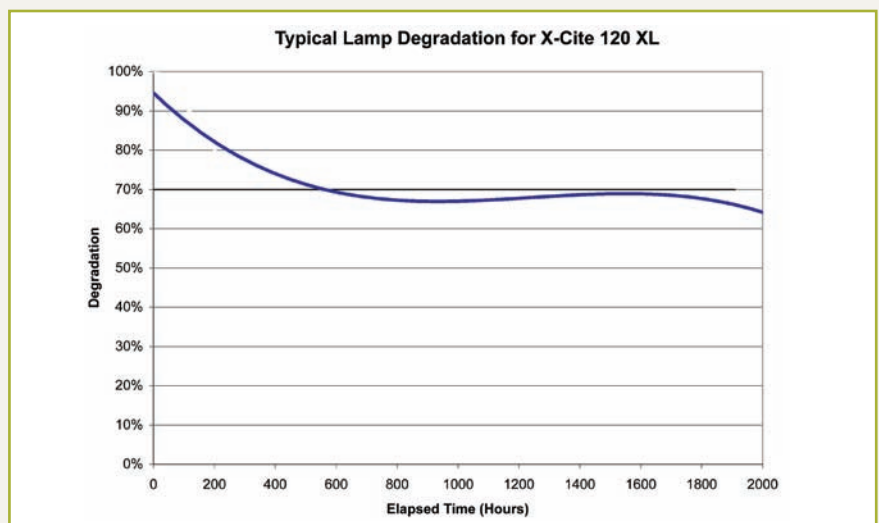
► Custom Optic



► Light Guide

## 2000 HOURS OF CONSISTENT LAMP LIFE

For both quality and safety reasons, most conventional illumination lamps have a maximum recommended life of up to 300 hours. The Metal Halide lamp used in the X-Cite® 120 has a typical life of 2000 hours – and delivers consistent intensity from first use to last.



# SPECIFICATIONS

## INCLUDES

Lamp module, liquid light guide with adapter, grounded and shielded power cord, and manual

## LAMP

Proprietary 120W Metal Halide

## LAMP LIFE:

2000 hours

## POWER SUPPLY

High efficiency, switch mode, line isolated, 90-264 VAC, 47-63 Hz, universal input

## WARM-UP PERIOD

90 seconds (typical)

## PANEL CONTROLS

Power On/Off

## PANEL DISPLAYS

Accumulated Lamp Usage, Lamp On Indicator, Lamp Failure Indicator

## DIMENSIONS

L x W x H  
13.5" x 5.5" x 6.5"

## WEIGHT

6.7 lbs. (3.04 kg)

## WORLDWIDE CERTIFICATIONS

CE Marked, Certified to IEC, Canadian and US Standards

## WARRANTY

1 year (excluding lamp and light guide)

**PLEASE NOTE:** Hg-LAMP CONTAINS MERCURY, Manage in Accord with Disposal Laws, See: [www.lamprecycle.org](http://www.lamprecycle.org) or call 1-800-668-8752



EXFO Photonic Solutions Inc. is certified under the ISO 9000 Quality Management System. Our global customers can trust that EXFO strives to be the best possible supplier in all aspects of our business.

EXFO Life Sciences & Industrial Division. 2260 Argentia Rd., Mississauga, Ontario L5N 6H7 Canada  
Tel: 1.905.821.2600 | Fax: 1.905.821.2055 | [x-cite@exfo.com](mailto:x-cite@exfo.com)  
Tollfree: 1.800.668.8752 (USA & Canada) | [www.exfo-xcite.com](http://www.exfo-xcite.com)  
EXFO Electro-Optical Engineering Inc. 400 Godin Ave., Quebec City, Quebec G1M 2K2 Canada  
Tel: 1.418.683.0211 | Fax: 1.418.683.2170

EXFO has made every effort to ensure that the information contained in this specification sheet is accurate. However, we accept no responsibility for any errors or omissions, and we reserve the right to modify design, characteristics and products at any time without obligation. Contact EXFO for prices and availability or to obtain the phone number of your local EXFO representative.



SPXCITE120.2AN Printed in Canada

